

CACHE TUYAU D'ARROSAGE

NOTICE D'INSTALLATION CACHE TUYAU D'ARROSAGE MODULE VENTELLE

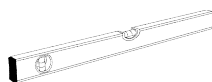
1x Perceuse



1x Mètre



1x Niveau à bulle



7x Vis + cheville 8x40



1x Crayon

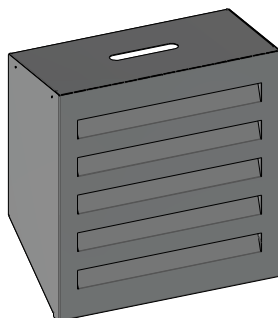


1x Marteau

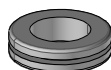


1x Visseuse

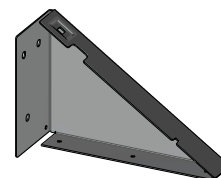
1x Tourne vis



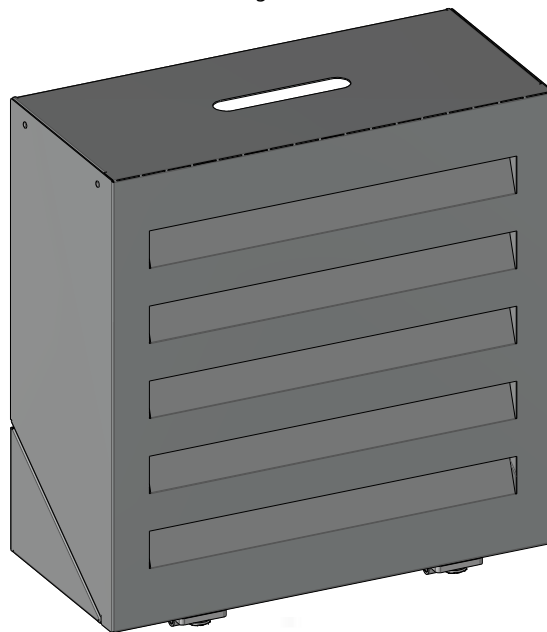
1x MCTAF600



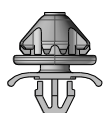
2x Support accessoire
arrosage



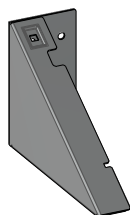
1x MCTAEQUD600



2x Charnières à frictions



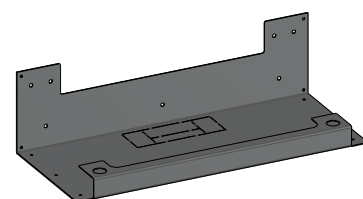
2x BOLLHOFF



1x MCTAEQUG600



8x VIS BHC M5



1x MCTAC600

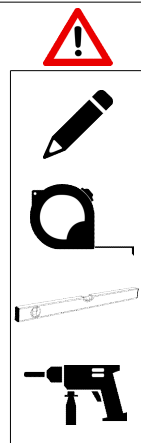
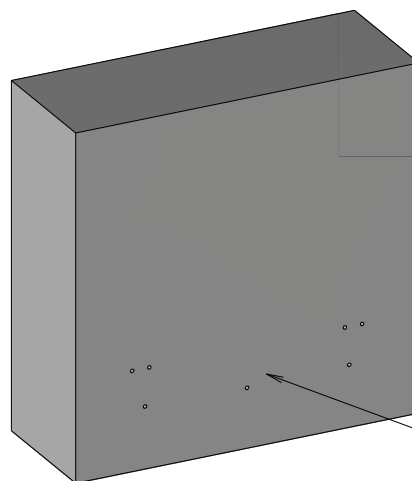
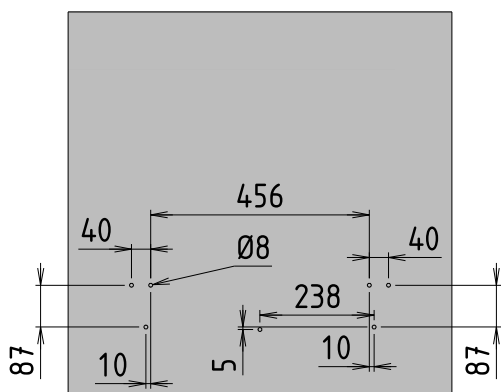
ATOLE

136 Av. des Razeteurs 34160 CASTRIES

Exigence et innovation

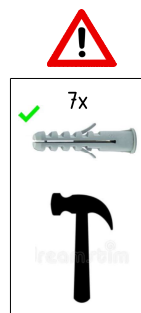
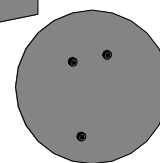
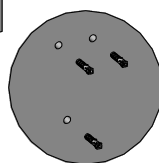
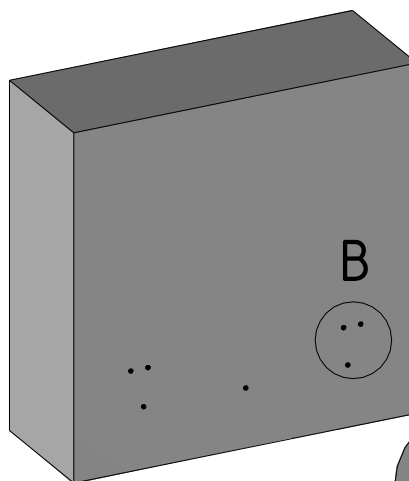
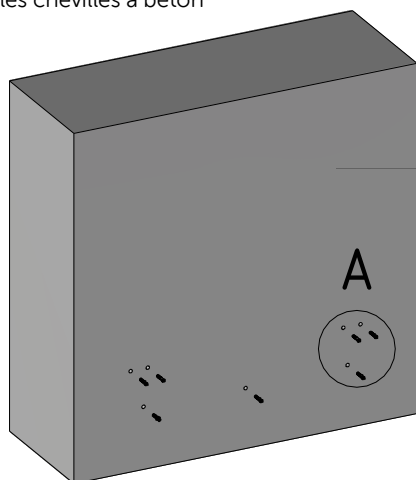
INSTALLATION DU CACHE TUYAU D'ARROSAGE

- ① Percer le mur pour fixer le cache tuyau d'arrosage



Perçage à Ø8

- ② Insérer les chevilles à béton



- ③ Fixer le cache tuyau d'arrosage

